



2001:610:240:0 193.0.0.202 62.109.128 195.048.02.03 178.42.02.02 2001:610:240 193.0.0.203 195.048.02.03
62.109.128 195.048.02.03 193.0.0.202 2001:610:240 193.0.0.203 2001:610:240:0 193.0.0.202
193.0.0.203 2001:610:240:0 193.0.0.202 62.109.128 195.048.02.03 178.42.02.02 2001:610:240 193.0.0.203
2001:610:240:0 193.0.0.202 62.109.128 195.048.02.03 178.42.02.02 2001:610:240 193.0.0.203
Number Resource Organization



Internet Number Resource Status Report

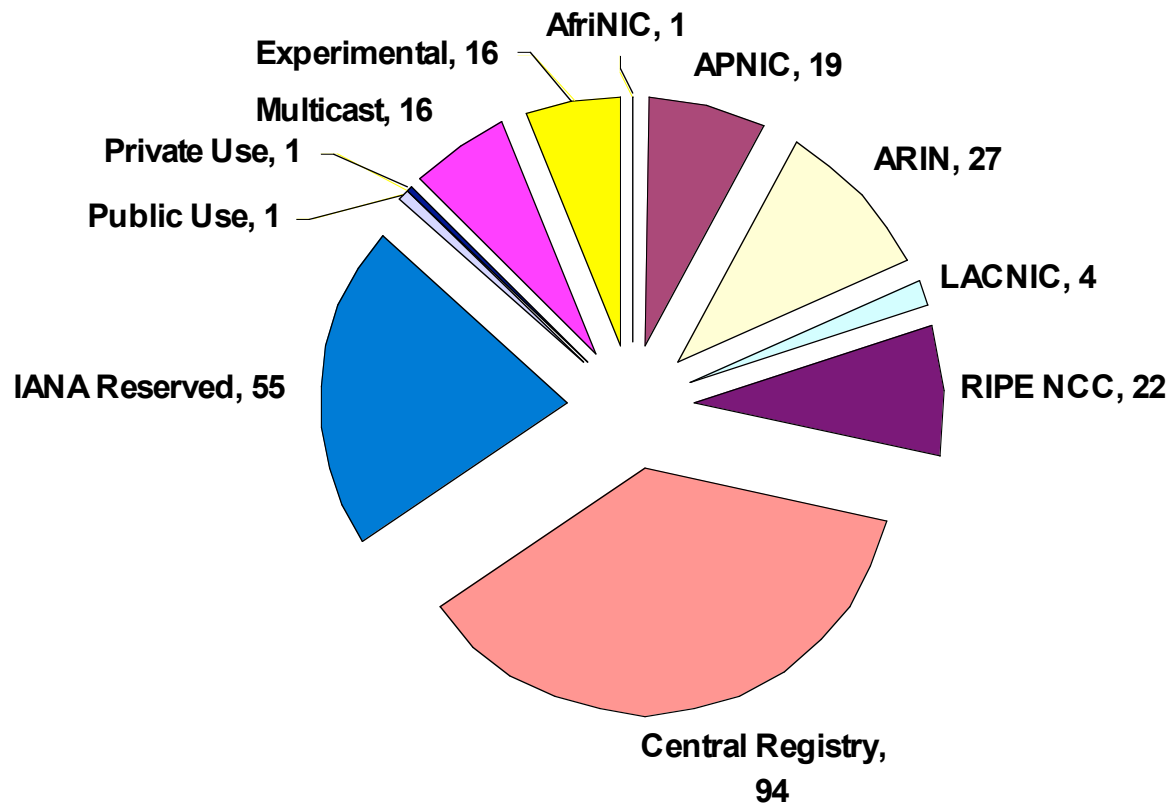
As of 31 December 2006

**Prepared by
Regional Internet Registries
AfrINIC, APNIC, ARIN, LACNIC and the RIPE NCC**

2001:610:240:0 193.0.0.202 62.109.128 195.048.02.03 178.12.02.02 2001:610:240 193.0.0.203 195.048.02.03
62.109.128 195.048.02.03 193.0.0.202 2001:610:240 193.0.0.203 2001:610:240:0 193.0.0.202
193.0.0.203 2001:610:240:0 193.0.0.202 62.109.128 195.048.02.03 178.12.02.02 2001:610:240 193.0.0.203
2001:610:240:0 193.0.0.202 62.109.128 195.048.02.03 178.12.02.02 2001:610:240 193.0.0.203
Number Resource Organization



Status of 256 /8s IPv4 Address Space

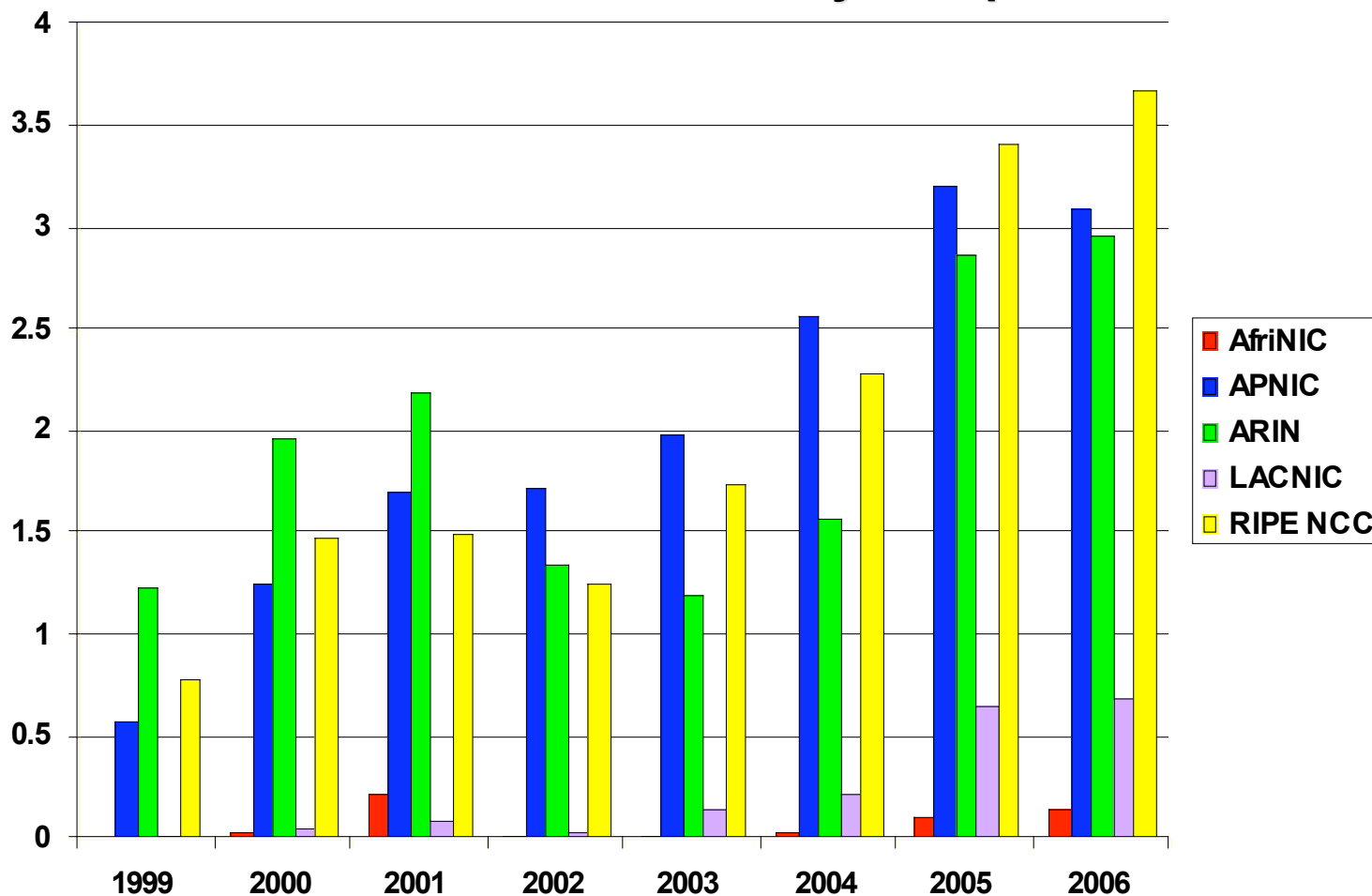


2001:610:240:0 193.0.0.202 62.109.128 195.048.02.03 178.12.02.02 2001:610:240 193.0.0.203 195.048.02.03
62.109.128 195.048.02.03 2001:610:240 193.0.0.202 62.109.128 195.048.02.03 178.12.02.02 2001:610:240 193.0.0.203
193.0.0.203 2001:610:240:0 193.0.0.202 62.109.128 195.048.02.03 178.12.02.02 2001:610:240 193.0.0.203
2001:610:240:0 193.0.0.202 62.109.128 195.048.02.03 178.12.02.02 2001:610:240 193.0.0.203
Number Resource Organization



IPv4 Allocations RIRs to LIRs/ISPs

Yearly Comparison

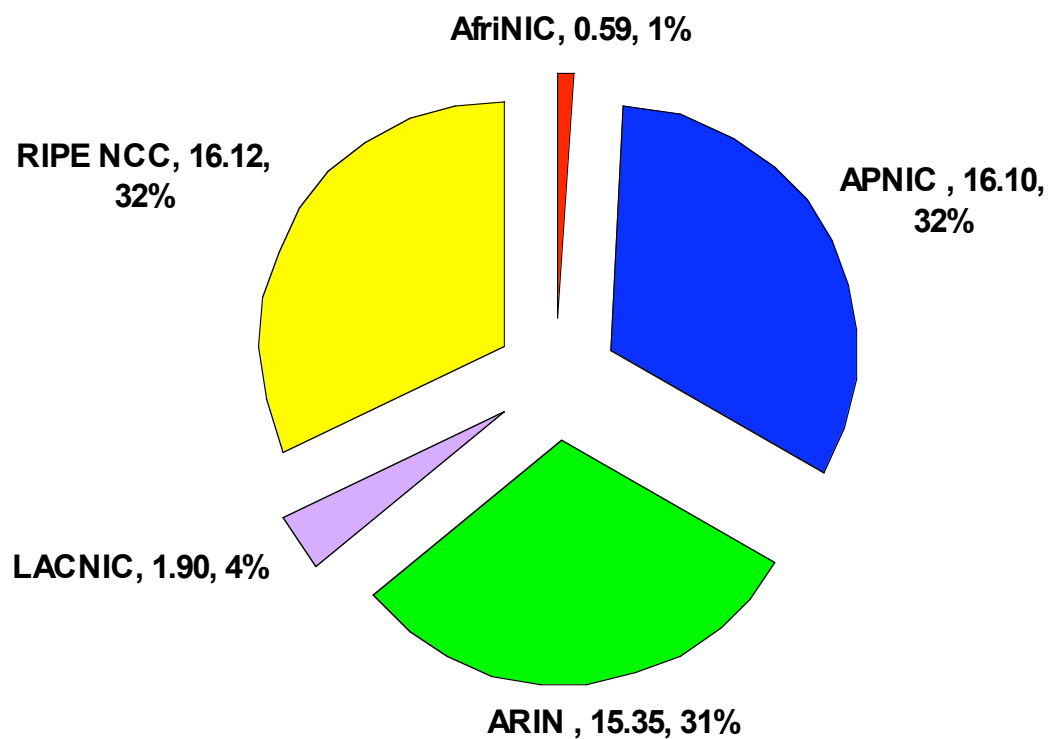


2001:610:240:0 193.0.0.202 62.109.128 195.048.02.03 178.12.02.02 2001:610:240 193.0.0.203 195.048.02.03
 62.109.128 195.048.02.03 193.0.0.202 2001:610:240 193.0.0.203 2001:610:240 193.0.0.202
 193.0.0.203 2001:610:240:0 193.0.0.202 62.109.128 195.048.02.03 178.12.02.02 2001:610:240 193.0.0.203
 2001:610:240:0 193.0.0.202 62.109.128 195.048.02.03 178.12.02.02 2001:610:240 193.0.0.203 195.048.02.03
 Number Resource Organization



IPv4 Allocations RIRs to LIRs/ISPs

Cumulative Total (Jan 1999 – Dec 2006)



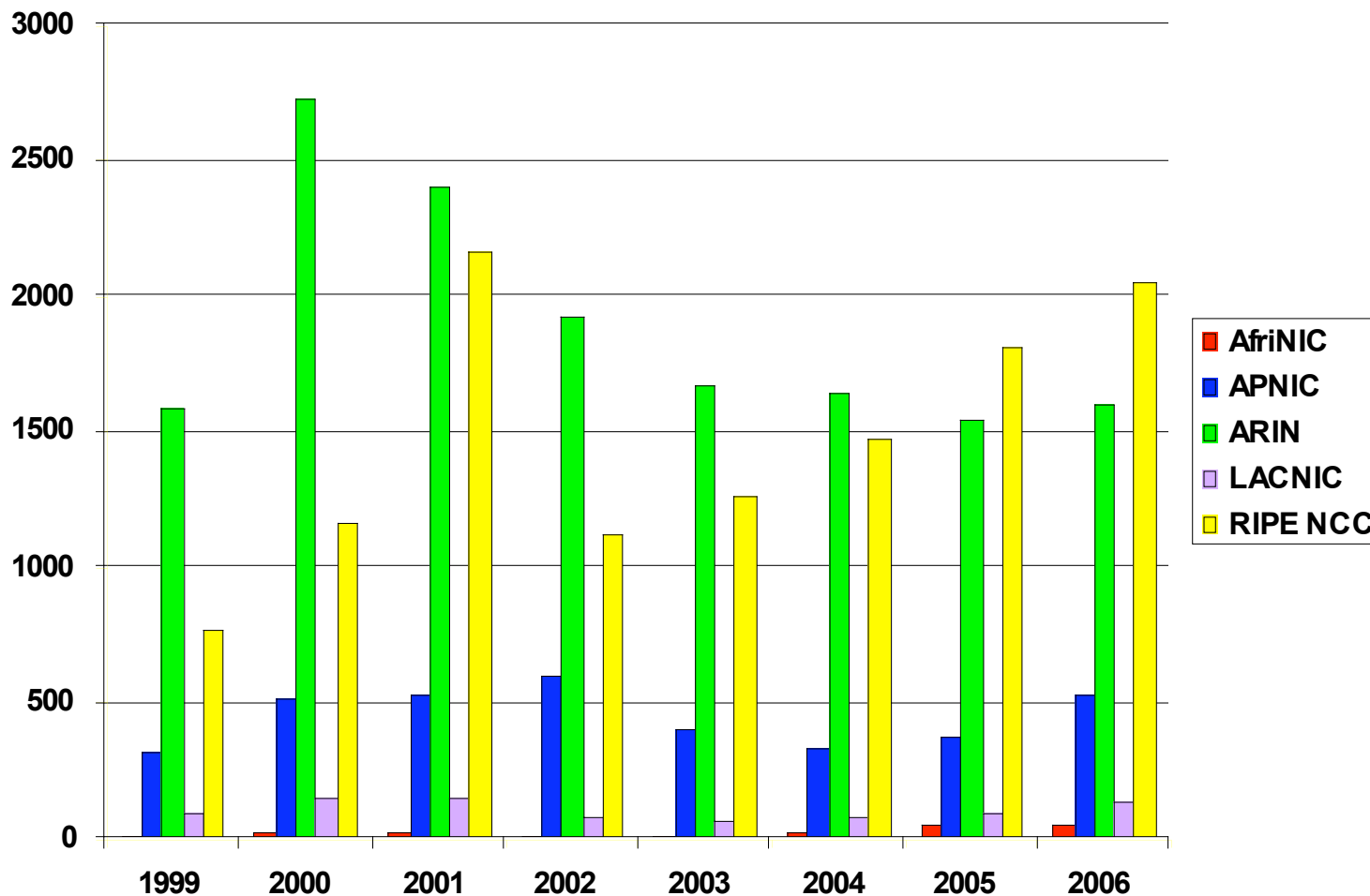
2001:610:240:0 193.0.0.202 62.109.128 195.048.02.03 178.12.02.02 2001:610:240 193.0.0.203 195.048.02.03
62.109.128 195.048.02.03 2001:610:240 193.0.0.202 62.109.128 195.048.02.03 178.12.02.02 2001:610:240 193.0.0.203
193.0.0.203 2001:610:240:0 193.0.0.202 62.109.128 195.048.02.03 178.12.02.02 2001:610:240 193.0.0.203
2001:610:240:0 193.0.0.202 62.109.128 195.048.02.03 178.12.02.02 2001:610:240 193.0.0.203

Number Resource Organization



ASN Assignments RIRs to LIRs/ISPs

Yearly Comparison



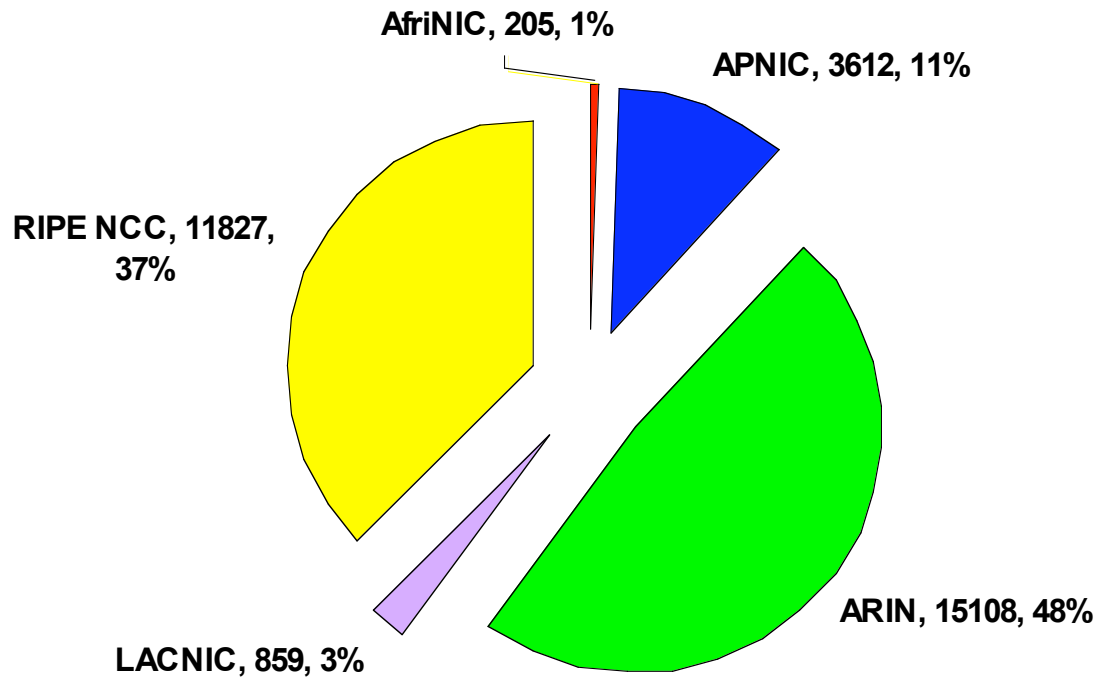
2001:610:240:0 193.0.0.202 62.109.128 195.048.02.03 178.12.02.02 2001:610:240 193.0.0.203 195.048.02.03
193.0.0.203 2001:610:240:0 193.0.0.202 62.109.128 195.048.02.03 178.12.02.02 2001:610:240:0 193.0.0.202
2001:610:240:0 193.0.0.202 62.109.128 195.048.02.03 178.12.02.02 2001:610:240:0 193.0.0.203 195.048.02.03
Number Resource Organization



ASN Assignments

RIRs to LIRs/ISPs

Cumulative Total (Jan 1999 – Dec 2006)

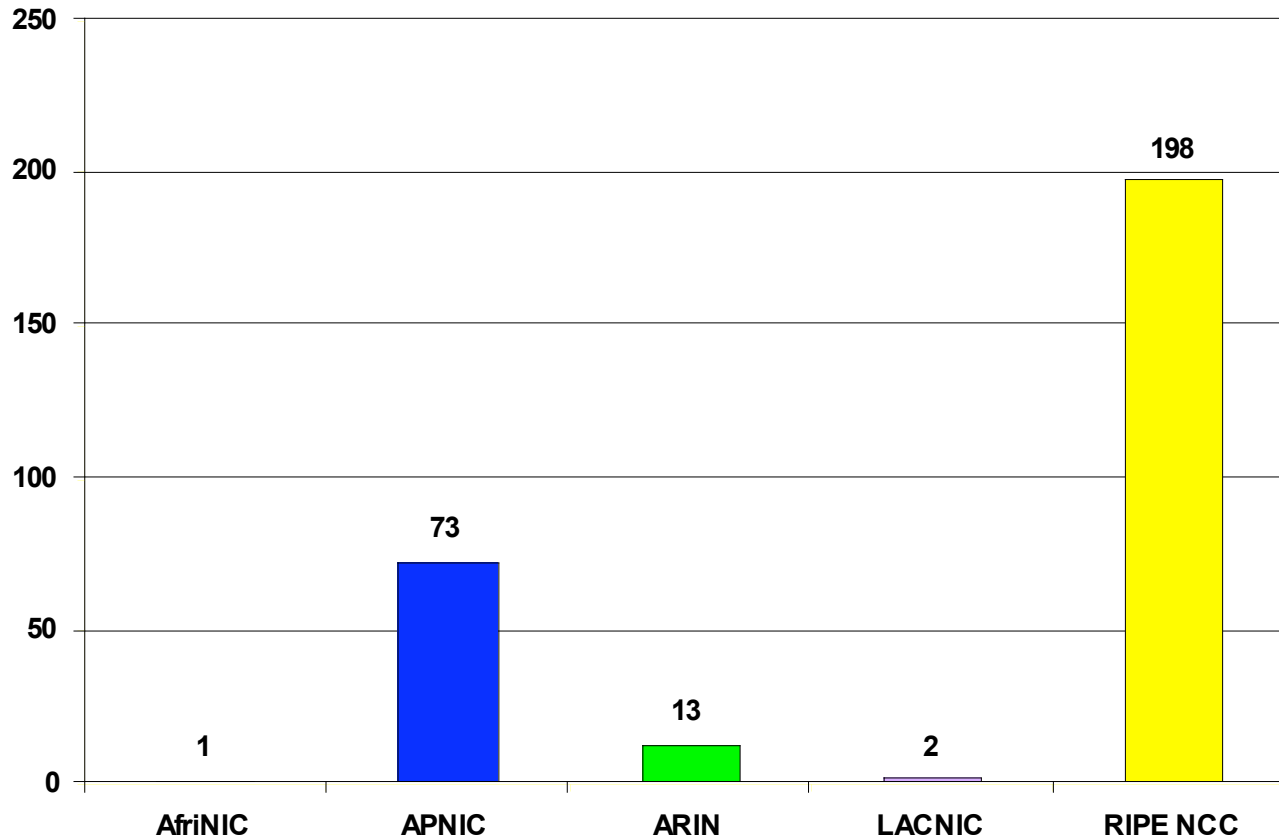


2001:610:240:0 193.0.0.202 62.109.128 195.048.02.03 178.12.02.02 2001:610:240 193.0.0.203 195.048.02.03
62.109.128 195.048.02.03 2001:610:240 193.0.0.202 62.109.128 195.048.02.03 178.12.02.02 2001:610:240 193.0.0.203
193.0.0.203 2001:610:240:0 193.0.0.202 62.109.128 195.048.02.03 178.12.02.02 2001:610:240 193.0.0.203
2001:610:240:0 193.0.0.202 62.109.128 195.048.02.03 178.12.02.02 2001:610:240 193.0.0.203
Number Resource Organization



IANA IPv6 Allocations to RIRs

issued as /23s prior to Oct 06



Number Resource Organization



IANA IPv6 Allocations to RIRs

issued Oct 06

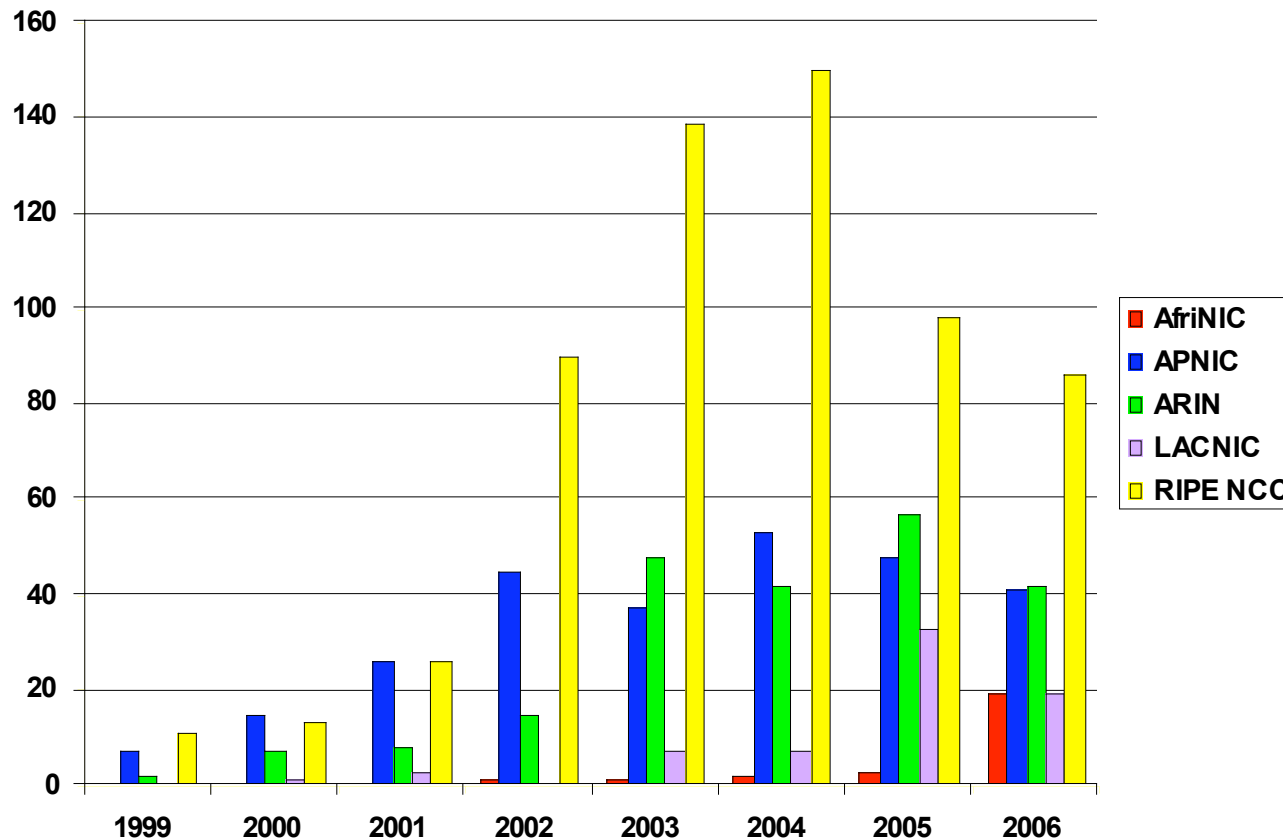
RIR	IPv6 Address
AfriNIC	2C00:0000::/12
APNIC	2400:0000::/12
ARIN	2600:0000::/12
LACNIC	2800:0000::/12
RIPE NCC	2A00:0000::/12

Some /23s from the previous slide are incorporated in these /12s

2001:610:2400 193.0.0.202 62.109.128 195.048.02.03 178.12.02.02 2001:610:240 193.0.0.203 195.048.02.03
62.109.128 195.048.02.03 2001:610:240 193.0.0.202 62.109.128 195.048.02.03 178.12.02.02 2001:610:240 193.0.0.203
193.0.0.203 2001:610:240-0 193.0.0.202 62.109.128 195.048.02.03 178.12.02.02 2001:610:240 193.0.0.203
2001:610:240-0 193.0.0.202 62.109.128 195.048.02.03 178.12.02.02 2001:610:240 193.0.0.203
Number Resource Organization



IPv6 Allocations RIRs to LIRs/ISPs Yearly Comparison

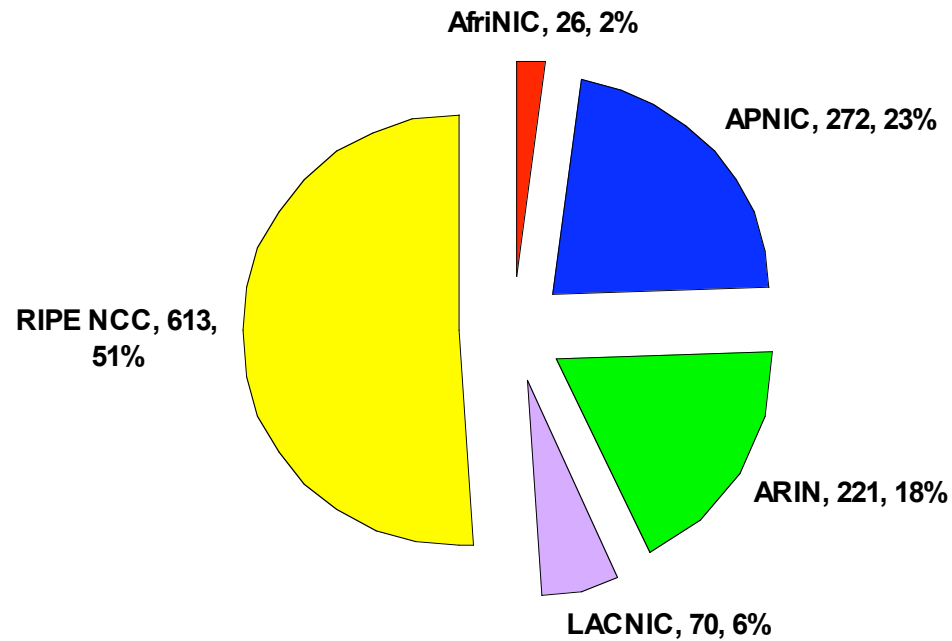


Number Resource Organization



IPv6 Allocations RIRs to LIRs/ISPs

Cumulative Total (Jan 1999 – Dec 2006)



2001:610:240:0 193.0.0.202 62.109.128 195.048.02.03 178.12.02.02 2001:610:240 193.0.0.203 195.048.02.03
62.109.128 195.048.02.03 2001:610:240 193.0.0.202 62.109.128 195.048.02.03 178.12.02.02 2001:610:240 193.0.0.203 195.048.02.03
193.0.0.203 2001:610:240:0 193.0.0.202 62.109.128 195.048.02.03 178.12.02.02 2001:610:240 193.0.0.203 195.048.02.03
2001:610:240:0 193.0.0.202 62.109.128 195.048.02.03 178.12.02.02 2001:610:240 193.0.0.203 195.048.02.03
Number Resource Organization



Links to RIR Statistics

- RIR Stats:
www.nro.net/statistics
- Raw Data/Historical RIR Allocations:
www.aso.icann.org/stats
www.iana.org/assignments/ipv4-address-space
www.iana.org/assignments/as-numbers
www.iana.org/assignments/ipv6-unicast-address-assignments

2001:610:240:0 193.0.0.202 62.109.128 195.048.02.03 178.12.02.02 2001:610:240 193.0.0.203 195.048.02.03
62.109.128 195.048.02.03 2001:610:240 193.0.0.202 62.109.128 95.048.02.03 178.12.02.02 2001:610:240 193.0.0.203
193.0.0.203 2001:610:240:0 193.0.0.202 62.109.128 195.048.02.03 178.12.02.02 2001:610:240 193.0.0.203 195.048.02.03
2001:610:240:0 193.0.0.202 62.109.128 195.048.02.03 178.12.02.02 2001:610:240 193.0.0.203 195.048.02.03
Number Resource Organization



THANK YOU!

2001:610:240:0 193.0.0.202 62.109.128 195.048.02.03 178.12.02.02 2001:610:240 193.0.0.203 195.048.02.03
62.109.128 195.048.02.03 193.0.0.202 2001:610:240 193.0.0.203 2001:610:240:0 193.0.0.202
193.0.0.203 2001:610:240:0 193.0.0.202 62.109.128 195.048.02.03 178.12.02.02 2001:610:240 193.0.0.203
2001:610:240:0 193.0.0.202 62.109.128 195.048.02.03 178.12.02.02 2001:610:240 193.0.0.203
Number Resource Organization